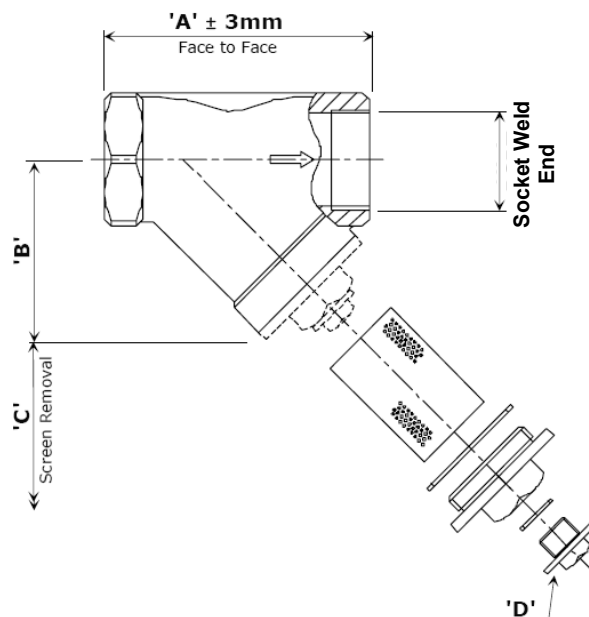


- Sizes :** ½" to 2" Nominal Bore
- Pressure:** 1440 psi / 100 bar
- Connection:** Socket Weld Ends acc. to ANSI B16.11
- Features:**
- Investment Cast Housing
 - Screwed Cover c/w Drain Plug
 - Full ANSI B16.5 600 LB rating
 - Red oxide finish (Carbon Steel only)
 - 0.8 perforated screen as standard
 - Available with NPT or BSPT (G) thread
 - European design
- Options:**
- Special baskets
- Standards:** PED 2014/68/EC
CE-Marking from size 1½" and above
EN 10204 / NACE Certification



All data is subject to confirmation at the time of order. Our policy is one of continual improvement and we reserve the right to amend details without prior notice.

Technical Data

Size		Dimensions				Mesh Size (standard)	Weight (kg)
Inch	Ø [mm] Socket Weld	A	B	C	D		
½"	21,70...22,20	66,0	50,0	70,0	¼" BSPP	0,8 mm	0,30
¾"	27,05...27,55	80,0	60,0	85,0	¼" BSPP	0,8 mm	0,45
1"	33,80...34,30	92,0	72,0	95,0	½" BSPP	0,8 mm	0,88
1½"	48,65...49,15	120,0	87,0	130,0	½" BSPP	0,8 mm	1,50
2"	61,10...61,60	140,0	100,0	170,0	½" BSPP	0,8 mm	2,20

Materials of Construction

Item	Stainless Steel
Strainer body (cast)	ASTM A351 CF8M (~1.4408)
Strainer cover (cast)	ASTM A351 CF8M (~1.4408)
Cover gasket	P.T.F.E. as standard
Drain plug	ASTM A351 CF8M (~1.4408)
Drain Gasket	P.T.F.E. as standard
Screen (perforated)	ST.ST.316 (0.8 mm as standard / to customer specification)

Model Number Derivation : YSW/BFI/*/351**

Size, i.e. add 025 for a 1"