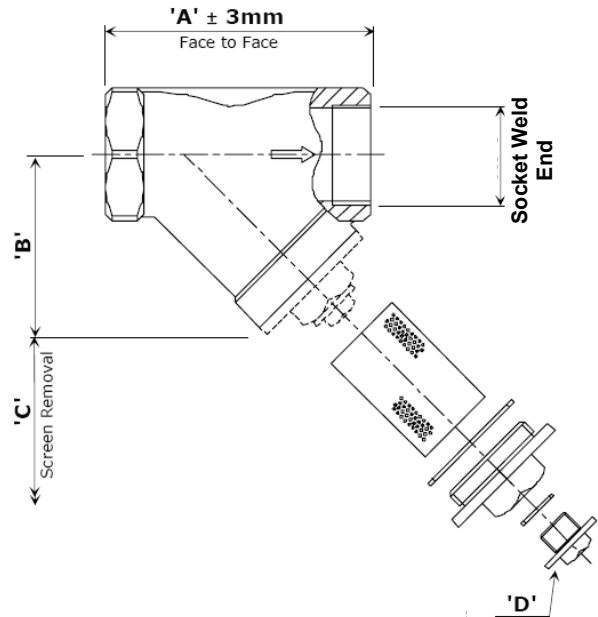


- Sizes :** ½" to 2" Nominal Bore
- Pressure:** 1975 psi / 136,2 bar
- Connection:** Socket Weld Ends acc. to ANSI B16.11
- Features:**
- Investment Cast Housing
  - Screwed Cover c/w Drain Plug
  - Full ANSI B16.34 800 LB rating
  - Red oxide finish (Carbon Steel only)
  - 0.8 perforated screen as standard
  - max. 1.6 mm corrosion allowance
  - European design
- Options:**
- Special baskets
- Standards:**
- PED 2014/68/EC  
CE-Marking from size 1¼" and above  
EN 10204 / NACE Certification



All data is subject to confirmation at the time of order. Our policy is one of continual improvement and we reserve the right to amend details without prior notice.

### Technical Data

Size		Dimensions				Mesh Size (standard)	Weight (kg)
Inch	Ø [mm] Socket Weld	A	B	C	D		
½"	21,70...22,20	70,0	50,0	70,0	¼" BSPP	0,8 mm	0,5
¾"	27,05...27,55	86,0	60,0	85,0	¼" BSPP	0,8 mm	0,8
1"	33,80...34,30	102,0	72,0	95,0	½" BSPP	0,8 mm	1,3
1¼"	42,55...43,05	132,0	87,0	130,0	½" BSPP	0,8 mm	2,6
1½"	48,65...49,15	132,0	87,0	130,0	½" BSPP	0,8 mm	2,6
2"	61,10...61,60	150,0	100,0	170,0	½" BSPP	0,8 mm	4,0

### Materials of Construction

Item	Carbon Steel
Strainer body (cast)	ASTM A216 WCB (~1.0619)
Strainer cover (cast)	ASTM A216 WCB (~1.0619)
Cover gasket	P.T.F.E. as standard
Drain plug	ASTM A216 WCB (~1.0619)
Drain Gasket	P.T.F.E. as standard
Screen (perforated)	ST.ST.316 (0.8 mm as standard / to customer specification)

**Model Number Derivation : YSW/BFI/\*\*\*/216**

Size, i.e. add 025 for a 1"